



Tutorial 4:

Create a new learning design using the Freestyle mode

Version 2.0 | August 2009

Tom Boyle, Claire Bradley

Updates to this tutorial, other tutorials and guides and the GLO Maker software are available from the GLO Maker website: <http://www.glomaker.org>

Copyright © London Metropolitan University 2009

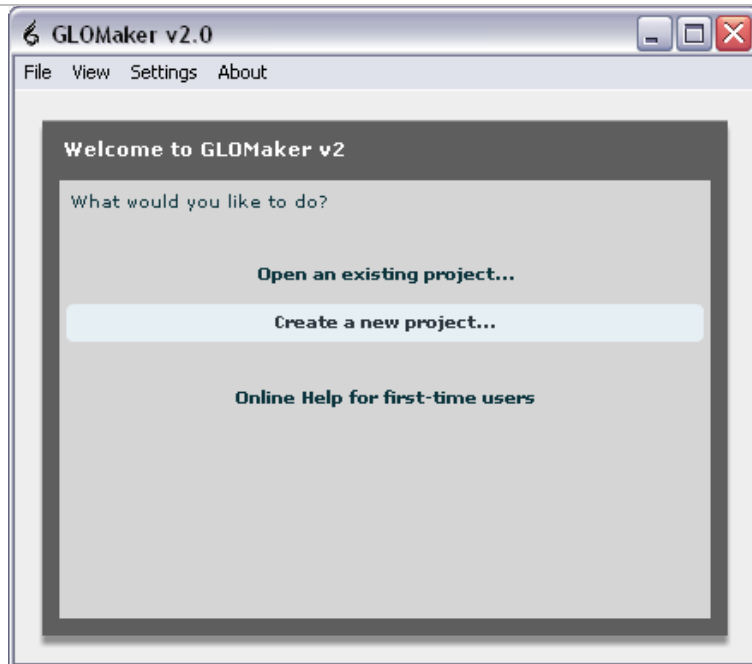
GLO Maker has been developed by the RLO-CETL and Learning Technology Research Institute (LTRI) at London Metropolitan University



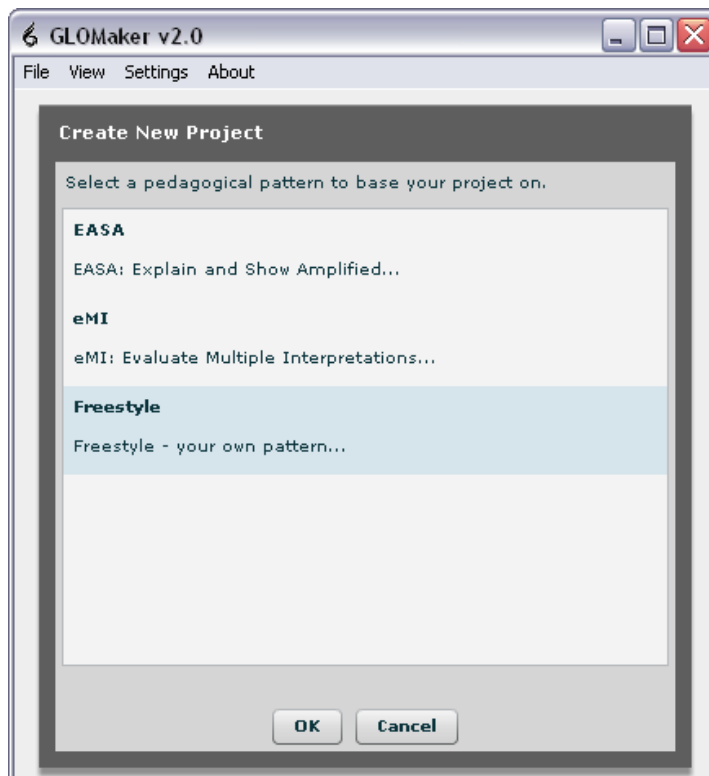
Tutorial 4: Create a new learning design using the Freestyle mode

In 'Freestyle' mode you can create your own pedagogical 'storyline' by creating a sequence of nodes (pedagogical functions) in the Planner. GLO Maker will automatically 'guess' the best screen layouts to realise these functions. You then enter the Designer part of the tool where you can either use the suggested screen layout, or select and use a different layout.

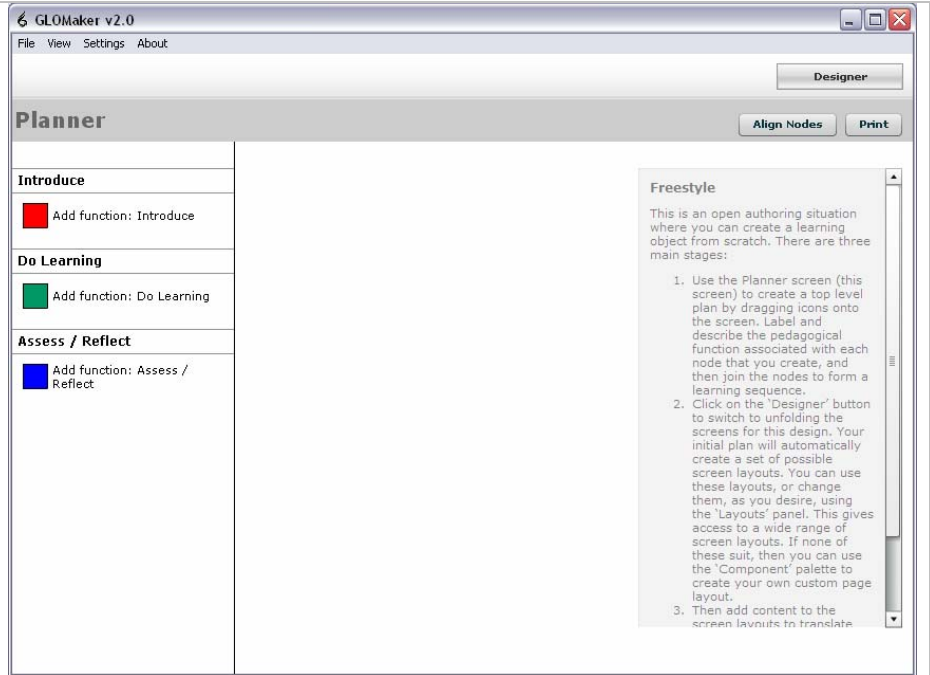
Open GLO Maker and select **Create a new project**.



Select **Freestyle** and click on **OK**.

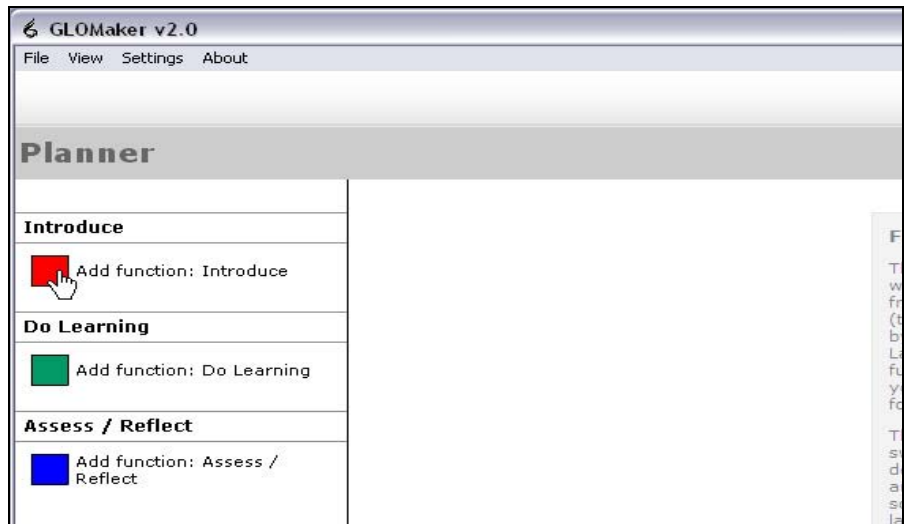


GLO Maker will display the **Planner** in Freestyle mode, so that you can create your own learning design.

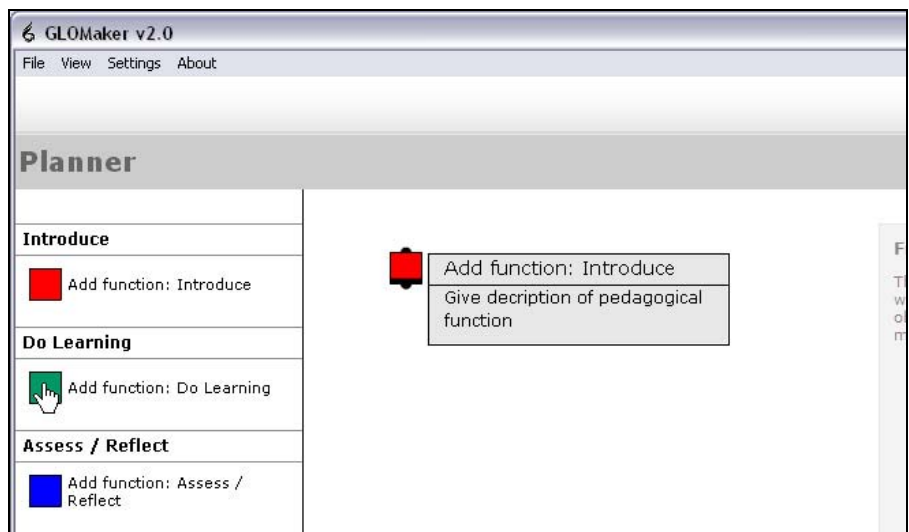


From the left hand menu click on or select and drag an **'Add function: Introduce'** node onto the main screen area.

Tip: you can either click on a node to create it or drag and drop it onto the stage area. If you 'drag and drop' you have more control over where the node is positioned.



Select and drag an **'Add function: Do Learning'** node onto the main screen and place it underneath the 'Add function: Introduction' node.



Select and drag an 'Add function: Assess/Reflect' node.

Repeat this step so that there are 2 'Add function: Assess/Reflect' nodes.

We will now label each node in the 'storyline' and describe its function.

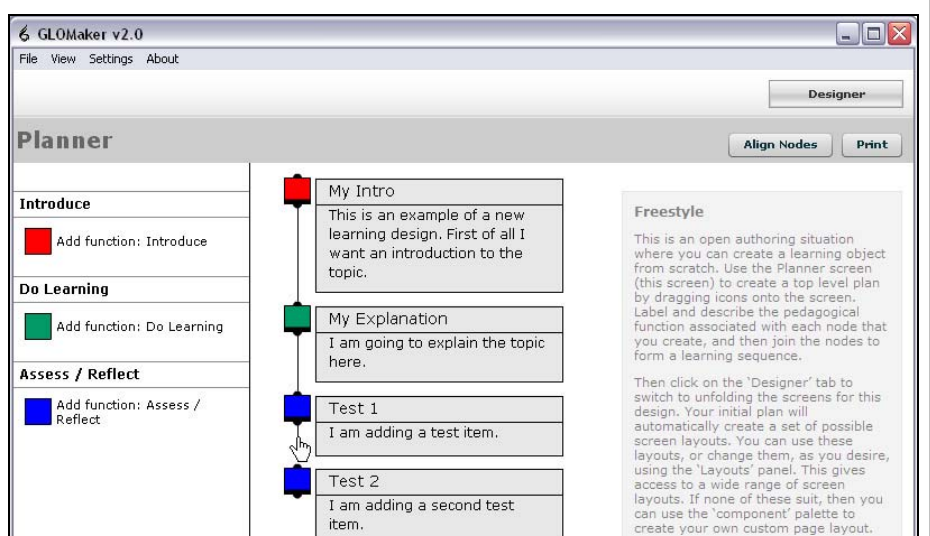
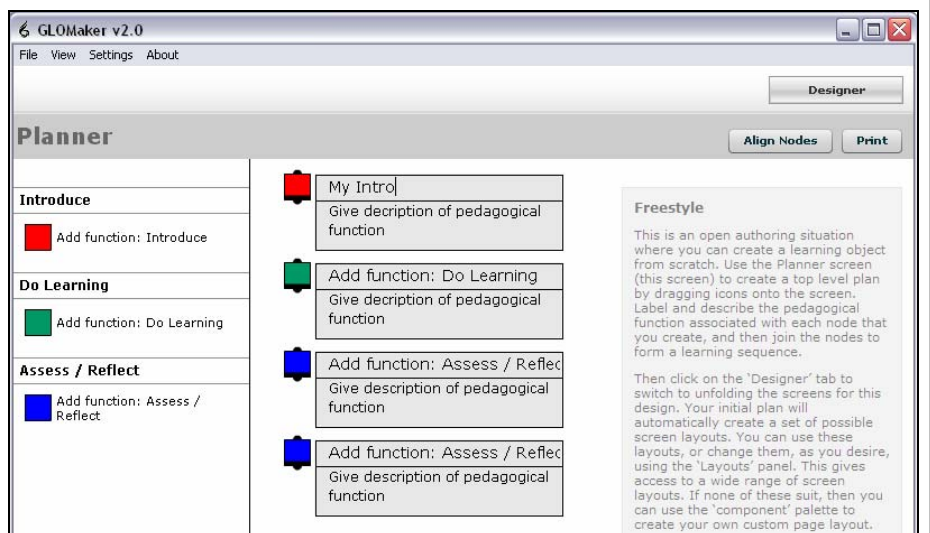
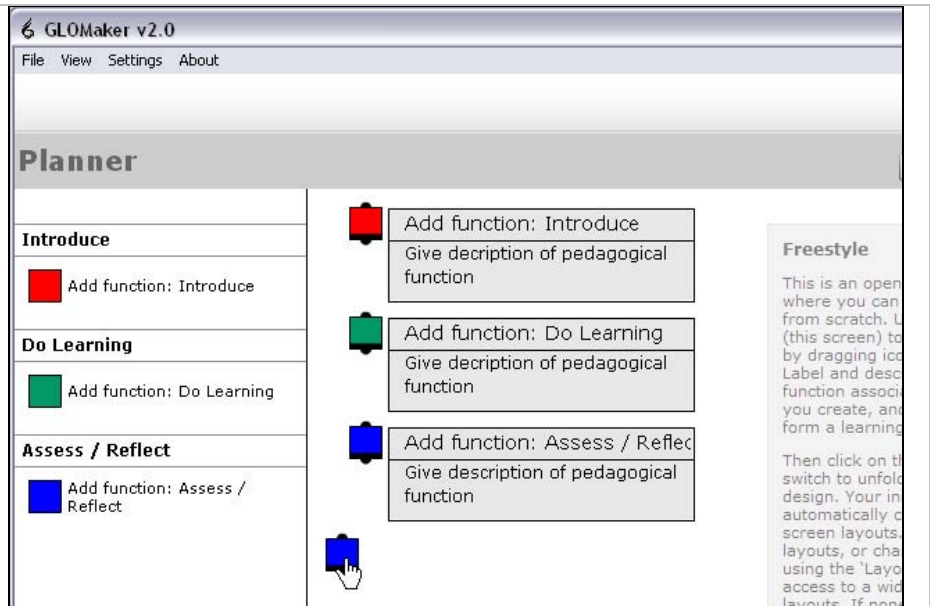
In the first node add a label. This example uses "My Intro", but you can add your own text for both the title and description of the pedagogical function.

Note: if you are unsure what to write just copy the text in the next example.

Once you have added your text descriptions to all the nodes you need to join the nodes together to create a pedagogical sequence.

Click on the black area at the bottom of the first node (My Intro) and a connection line should appear. Drag this to the node below (My Explanation).

Repeat, until all the nodes are joined.



Moving and editing the sequence of nodes

If you want to reposition a node on the stage you can click on and drag the node around.

If you press the 'right mouse button' over a node you have the following options:

- 'Extract Node' will break the link to that node
- 'Delete Node' will delete the node
- 'Delete All' will delete all the nodes.

You can align all the nodes together by clicking on the 'Align Nodes' button at the top right above the stage.

To **save** your pedagogical pattern (storyline) select **File** from the main menu, and select **Save**.

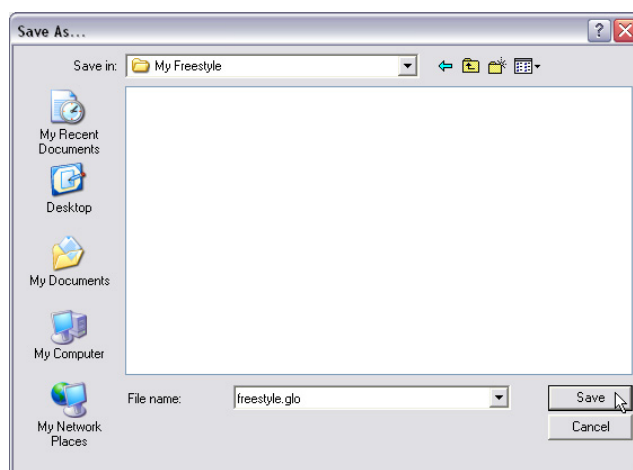
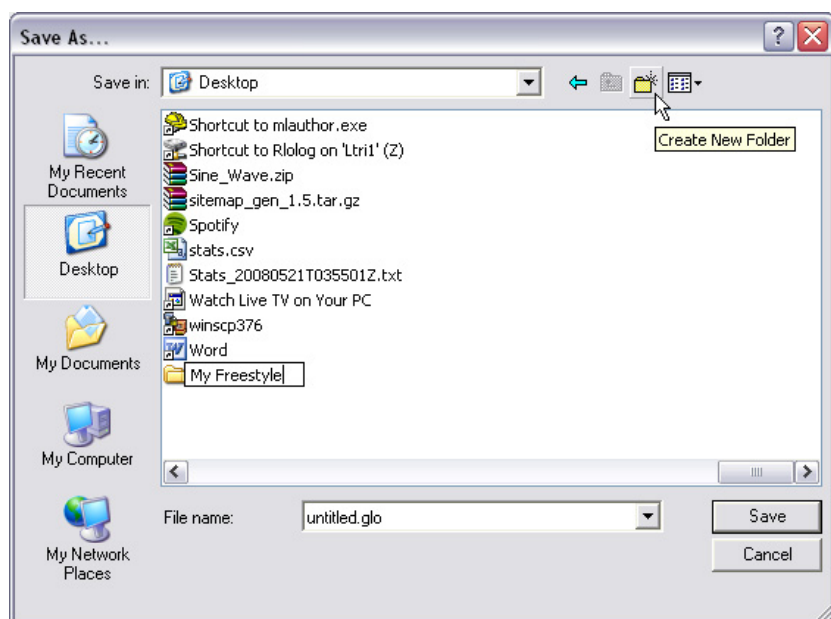
The **Save As...** pop up window will open.

Select 'Desktop' and click on the **Create New Folder** button.

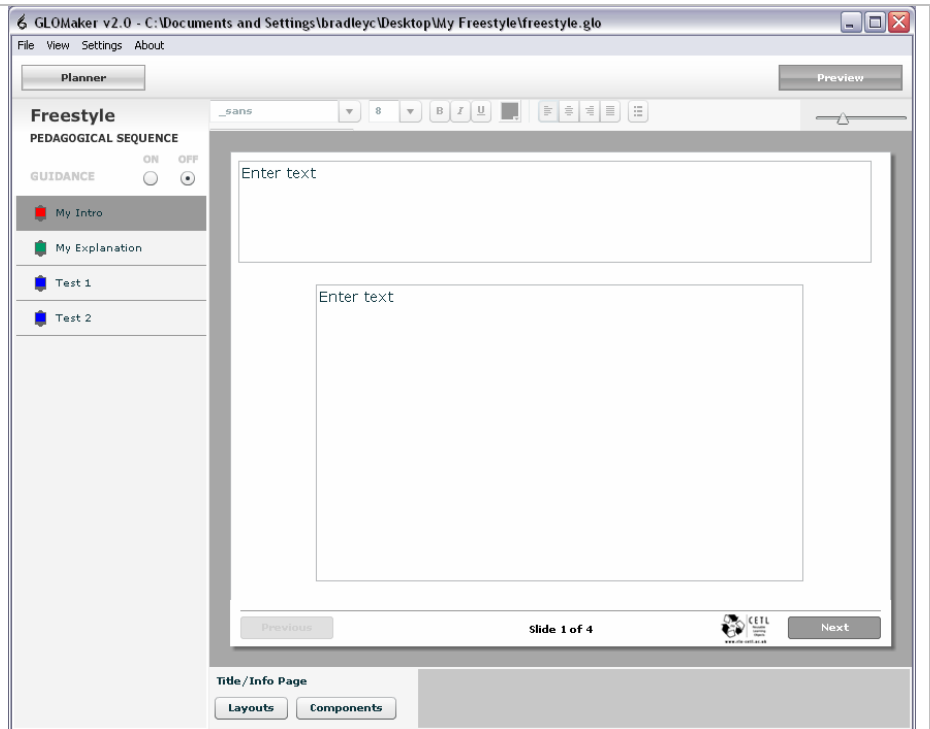
Give the new folder a name. We have used "**My Freestyle**".

Then provide a 'File name' for your GLO and click **Save**. We have called ours "**freestyle.glo**".

Tip: You should keep the **.glo** file extension, so that GLO Maker recognises the file.



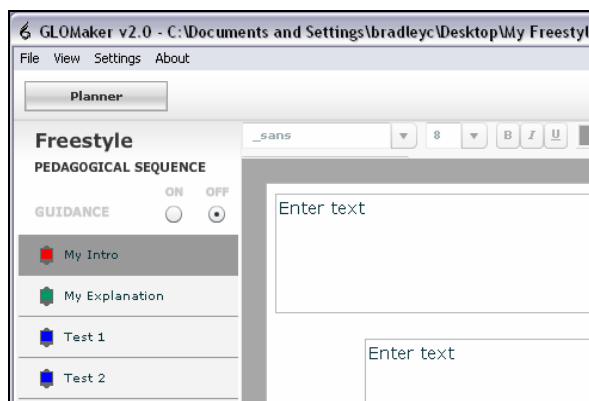
When you are happy with your learning design, you can click on the **Designer** button and start to add content to your GLO.



In the 'Pedagogical sequence' panel you will see that the labels you added for each node are displayed.

Click on each node to add content to each slide.

If you want to change the names of the labels, you can switch back to the 'Planner' at any time and change them.



For more guidance on how to enter content in the 'Designer' see Tutorial 3: Create a GLO with the eMI pattern. The process for entering content to slides is the same in each pattern, although the default screen templates may vary.